

# LUISA

**LENGTH** 47.60M | 156.2FT

**BUILDER** HEESSEN

**BUILD / REFIT** 1998 / 2024







# LUISA

---

Previously privately owned, this delicate and pristine 47m Heesen joined the charter market in 2018. With an immaculate look due to her latest refit in 2024, M/Y LUISA owes her minimalist and elegant Interior design to Ivana Porfiri. Her quality design and professional crew reflect LUISA's nature, offering minimalistic luxury in a relaxed living environment.

Her remarkable interior living area is completed by a full list of water toys. On this vessel, the size and proposed experience are not at the expense of speed: with a cruising speed of 13.5 knots and a maximum speed of 20 knots, motor yacht LUISA is directed and maintained by nine international crew members who provide exemplary service, they are all well trained to the highest safety standards.

---

# OVERVIEW



BUILDER **HEESEN**



BUILD **1998**



LENGTH **47.60M** | 156.2FT



REFIT **2024**



BEAM **8.50M** | 27.11FT



CREW **9**

# CAPACITY



**5** CABINS (3 DOUBLE, 2 TWIN)



**12** SLEEPING CAPACITY



**12** CRUISING CAPACITY

# PERFORMANCE



CRUISING SPEED **13.5 KNOTS**



FUEL CONSUMPTION **350L/H**



STABILIZERS **AT ANCHOR & UNDERWAY**





---

E X T E R I O R   D E C K S

---



























LUISA  
Madeira























































INTERIOR AREAS

















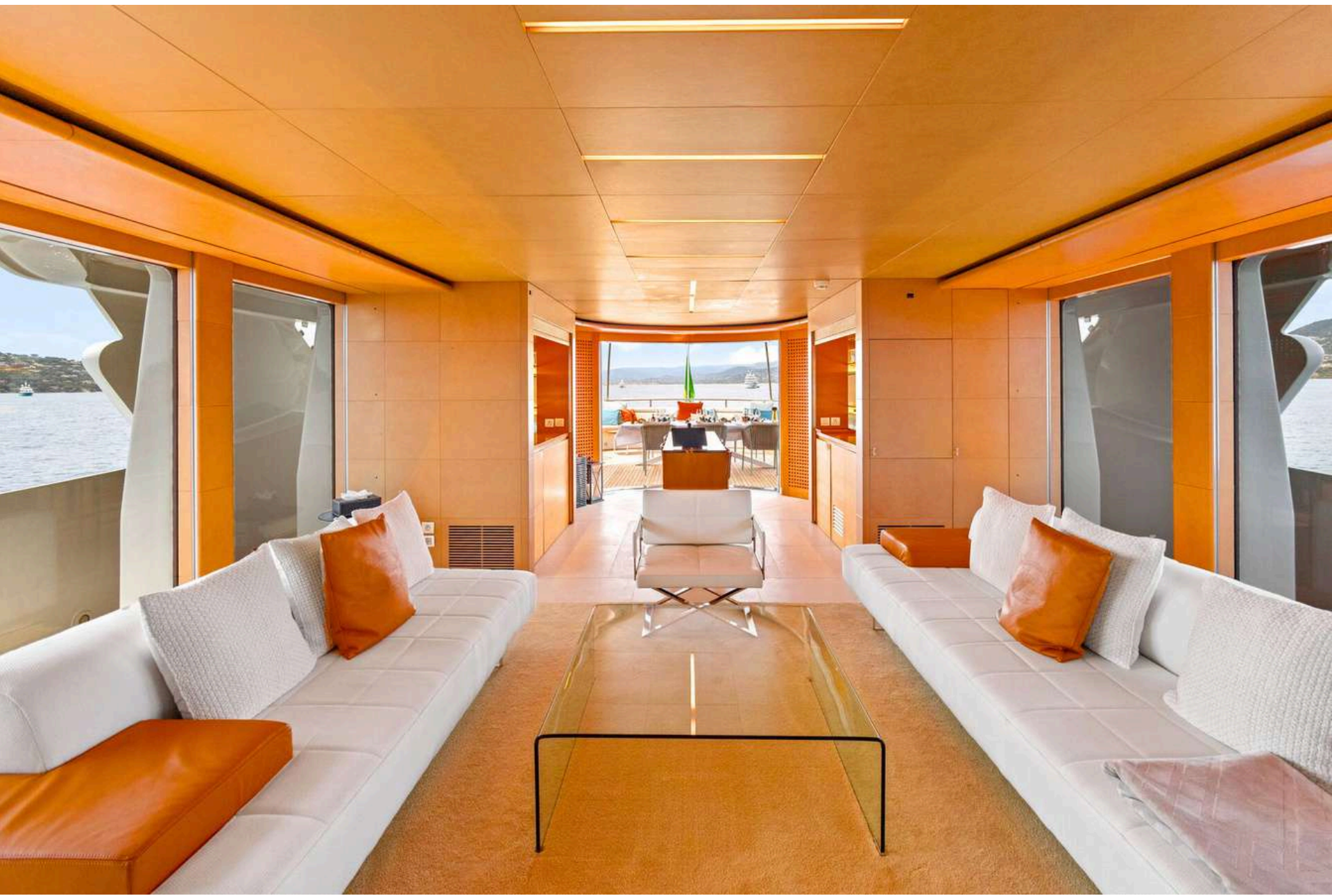








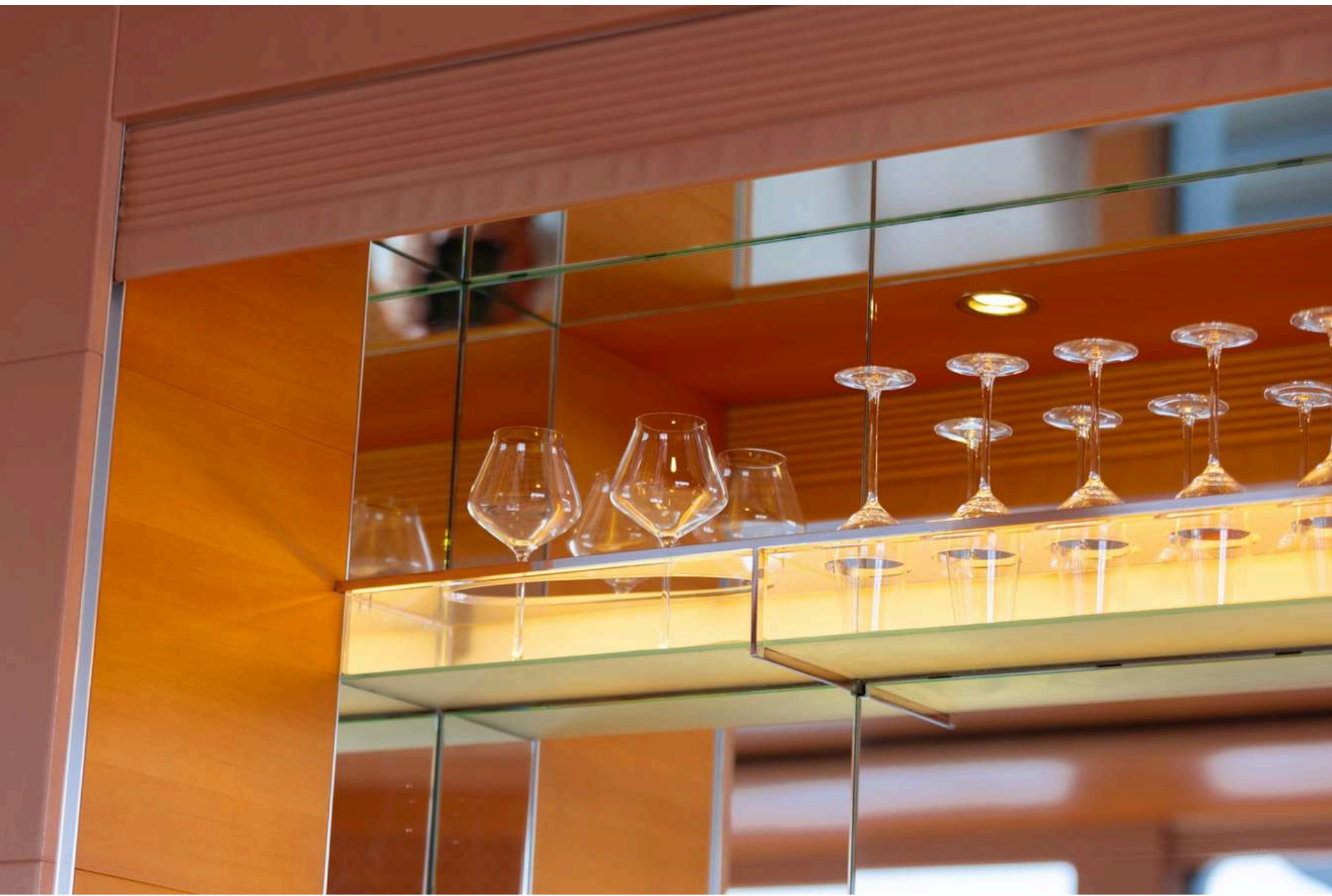














# ACCOMMODATION

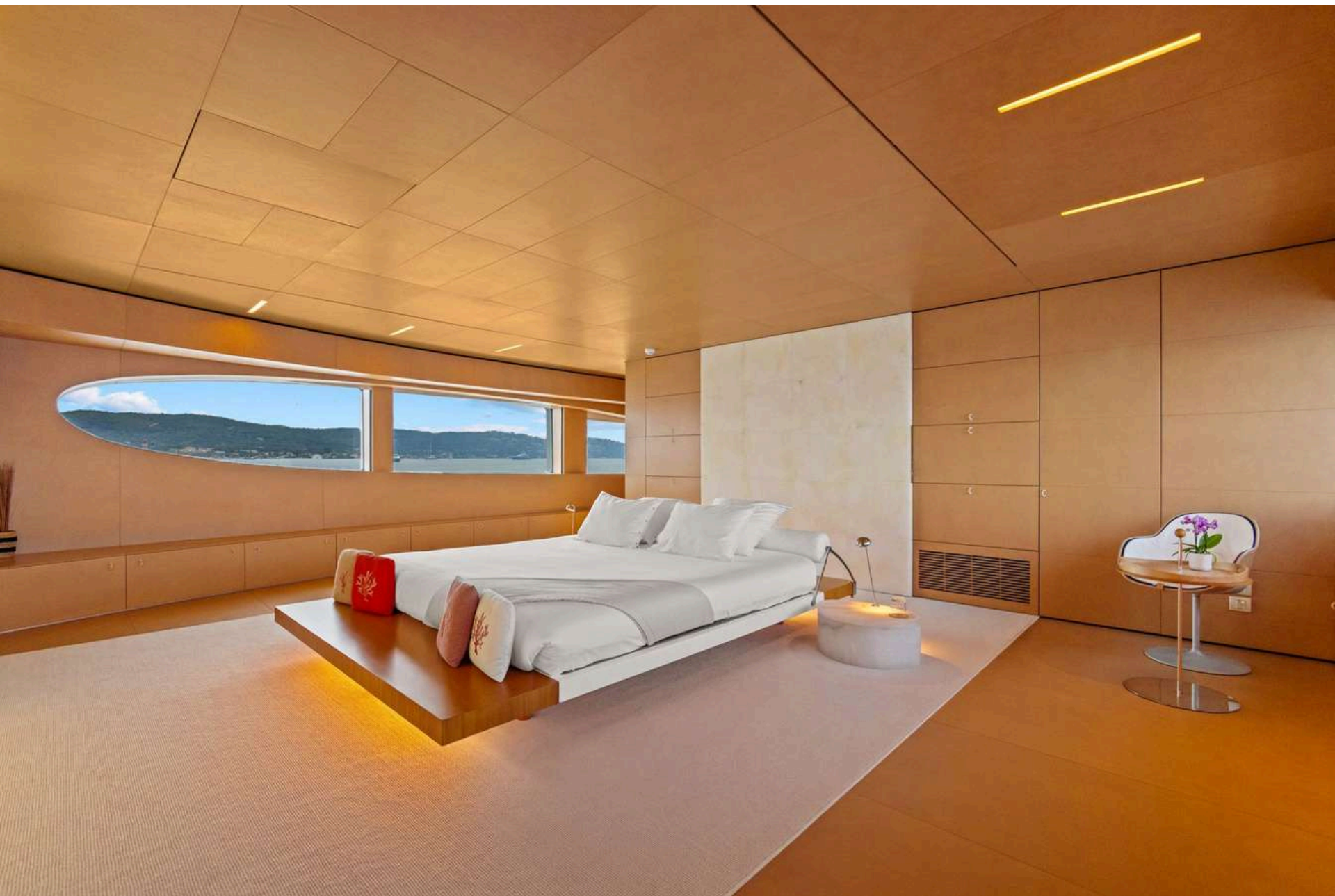
---

This floating palace offers the possibility to accommodate up to twelve guests in five different ensuite cabins. Located at the front of the main deck, her master cabin will leave you speechless, big enough to accommodate a private office, this cabin will leave the charter party fighting for a go ! Her ensuite bathroom is fully equipped, and her jet boost shower is a guaranteed experience. The three decks of motor yacht LUISA are joined by a beautiful and imperial brick spiral staircase which leads to the lower deck where the four remaining cabins can be found. Two double cabins with queen sized beds at the front of the yacht, and two twin cabins with single beds and a pullman suitable for adults at the aft of the vessel; all cabins present identical graceful, sober interiors and are paired with generous ensuite bathrooms.

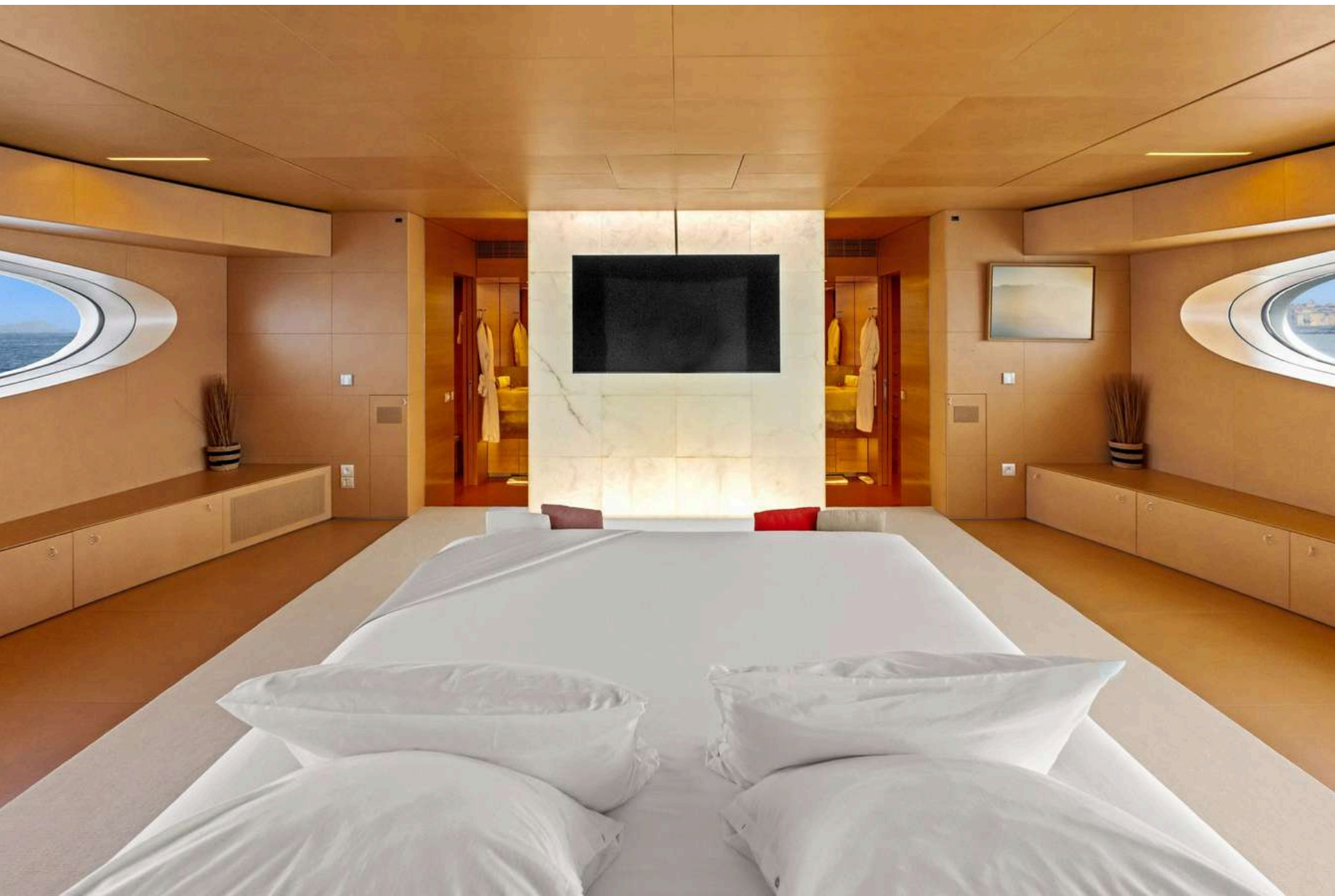
---



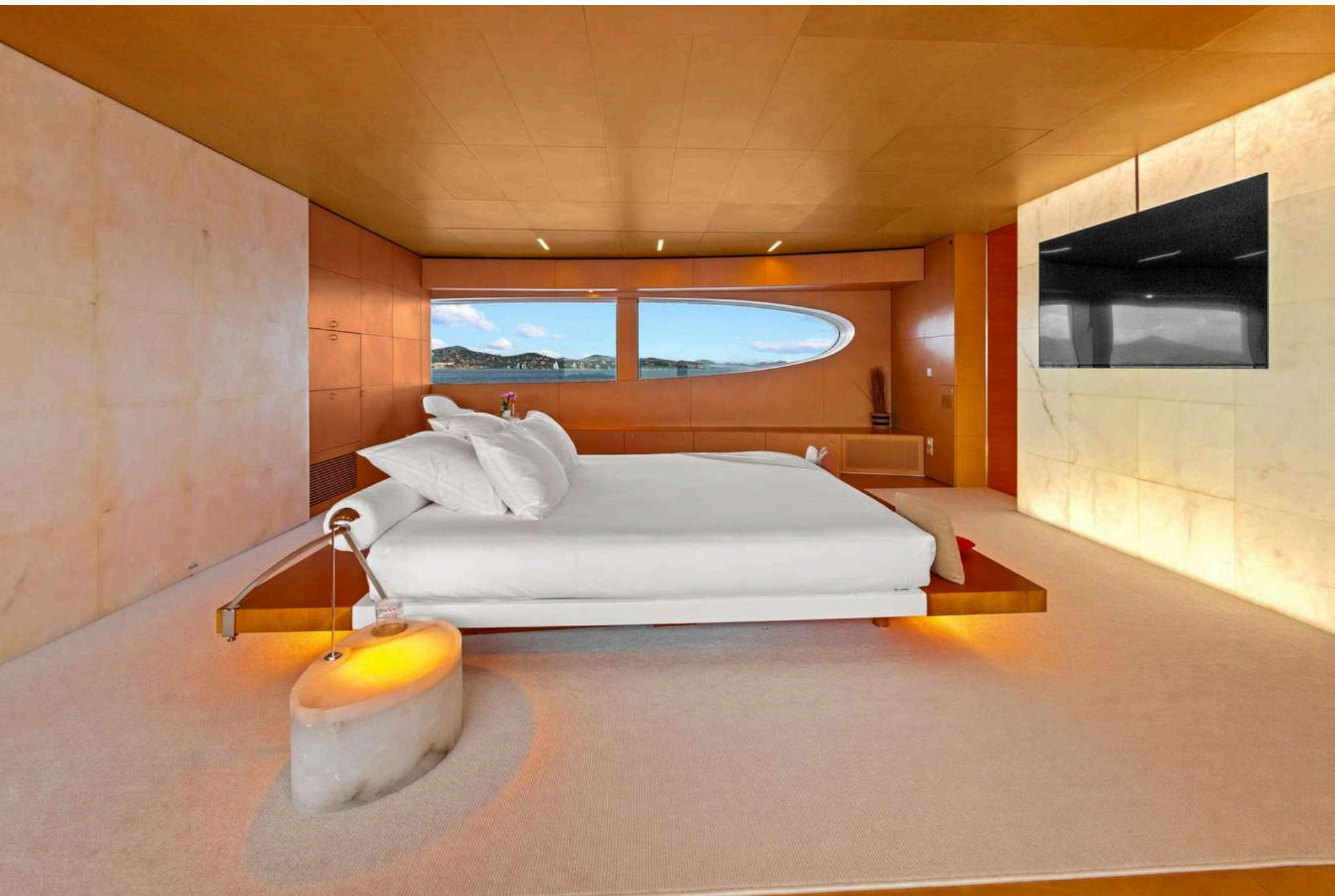








































LUISA

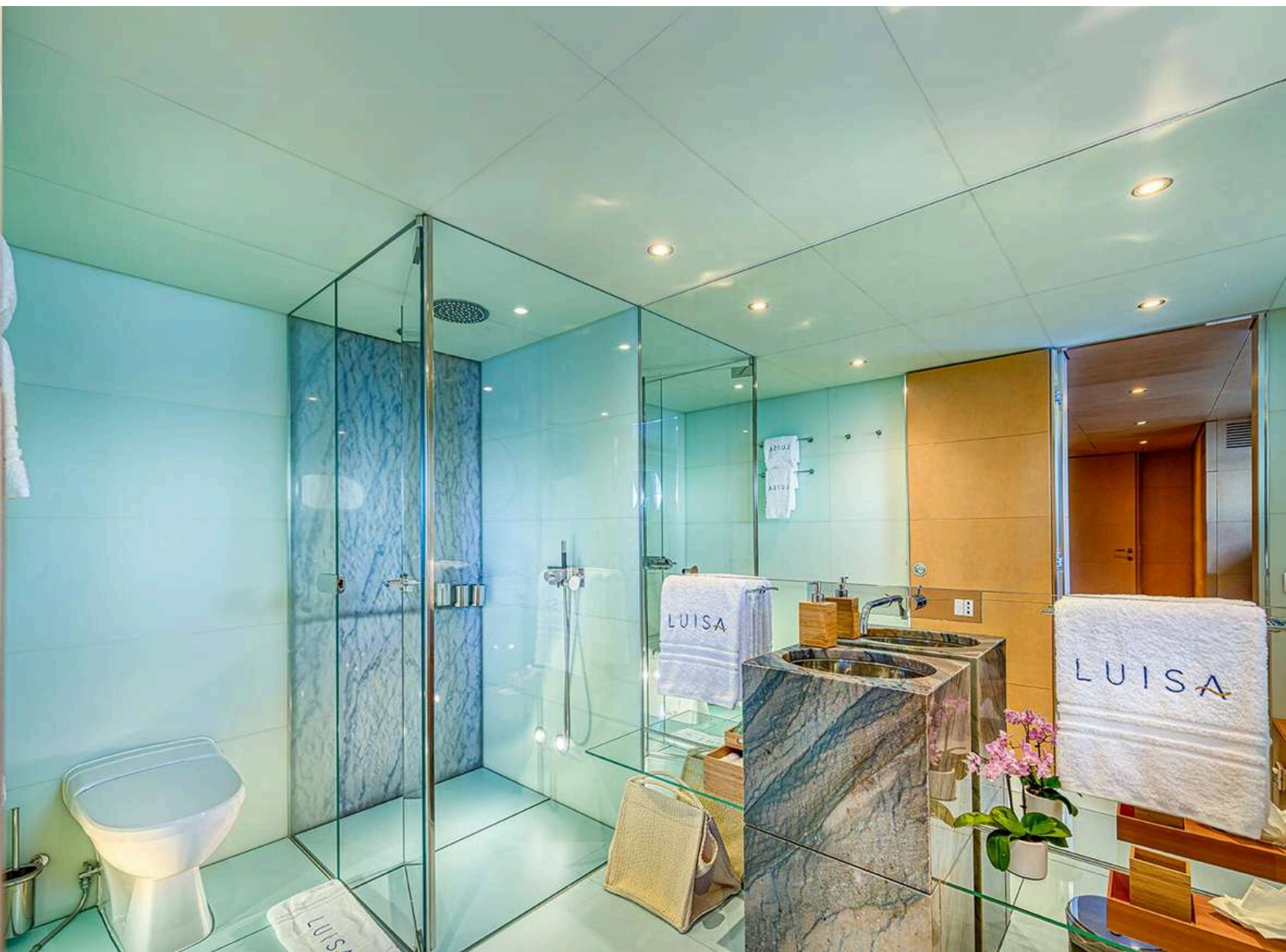
LUISA

LUISA

















# W A T E R T O Y S

---

1 x Chase boat 37 feet Axopar with 2 x 350Hp  
Mercury 1 x Jetski Spark (2 seats)  
1 x Airbeach marine inflatable platform  
1 x Seabob F5s  
1 x I Aqua ( seabob)  
2 x Seawing II Yamaha underwater scooter  
2 x Paddle boards  
1 x Efoil Plume 2024  
1 x Jetsurf + Jetsurf tube for beginners  
1 x Monoski  
1 x Waterski  
1 x Wakeboard  
3 x Donuts  
1 x Sofa  
12 x Sets of Masks & flippers  
1 x Jacuzzi on the flybridge  
2 x Electric scooter (trottinette)  
1 x Sailing boat Reverso air  
1 x Windsurf JP australia and Neilpryde sails  
1 x Wingfoil Plume and F One sails  
1 x Volley ball pit  
1x Bocce balls

---































# M / Y L U I S A

