



27M/88FT BAD MUTHA CHARTER BROCHURE

27M/88FT BAD MUTHA



THE WOW BOW

The Wallywhy200 embodies a design philosophy that seeks to integrate both form and function into a fresh and captivating experience. To enhance its performance on the sea like an explorer vessel, this yacht showcases a stunning glazed bow that reaches a height of 4.7 meters (15'5").

27M/88FT BAD MUTHA

THE UPPER DECK

The yacht's upper deck exudes elegance, boasting a sleek glass and carbon dome and an extended structural top without any supporting pillars. This not only enhances the yacht's stability and strength but also offers a more expansive aft upper deck, perfect for relaxing on sunloungers or enjoying a meal at the dining table in the shade. Guests can enter the sky-lounge through a large sliding door in Wally's first enclosed bridge, providing a seamless transition between indoor and outdoor spaces.



27M/88FT BAD MUTHA

JACUZZI



27M/88FT BAD MUTHA



DECK

On the deck, the beach club bulwarks can be folded down to grant access to the sea from three sides, effectively increasing the living area to an impressive 32 sqm (344 sqft).

27M/88FT BAD MUTHA



27M/88FT BAD MUTHA



27M/88FT BAD MUTHA

STEP INSIDE



27M/88FT BAD MUTHA

SALON AND DINING

The yacht's main deck is designed with sophistication in mind, featuring an extended, pillarless overhang above the aft area and flanking glass panels that provide shelter to the alfresco dining and lounging area. This area seamlessly connects to the main saloon, which boasts a contemporary, open-plan layout and is significantly larger than other yachts in its category, as exterior walkways have been repurposed. Sliding full-height doors lead to the main saloon, and an optional informal show kitchen layout adds to the yacht's luxurious and elegant design.



27M/88FT BAD MUTHA



27M/88FT BAD MUTHA



MASTER CABIN

Elevating the on-board experience to new heights, the yacht boasts a breathtaking 37sqm (398 sqft) master suite located at the forward bow of the main deck. The suite offers an unparalleled view of the sea with a continuous 270-degree panorama of the horizon, immersing guests in the beauty of the surroundings.

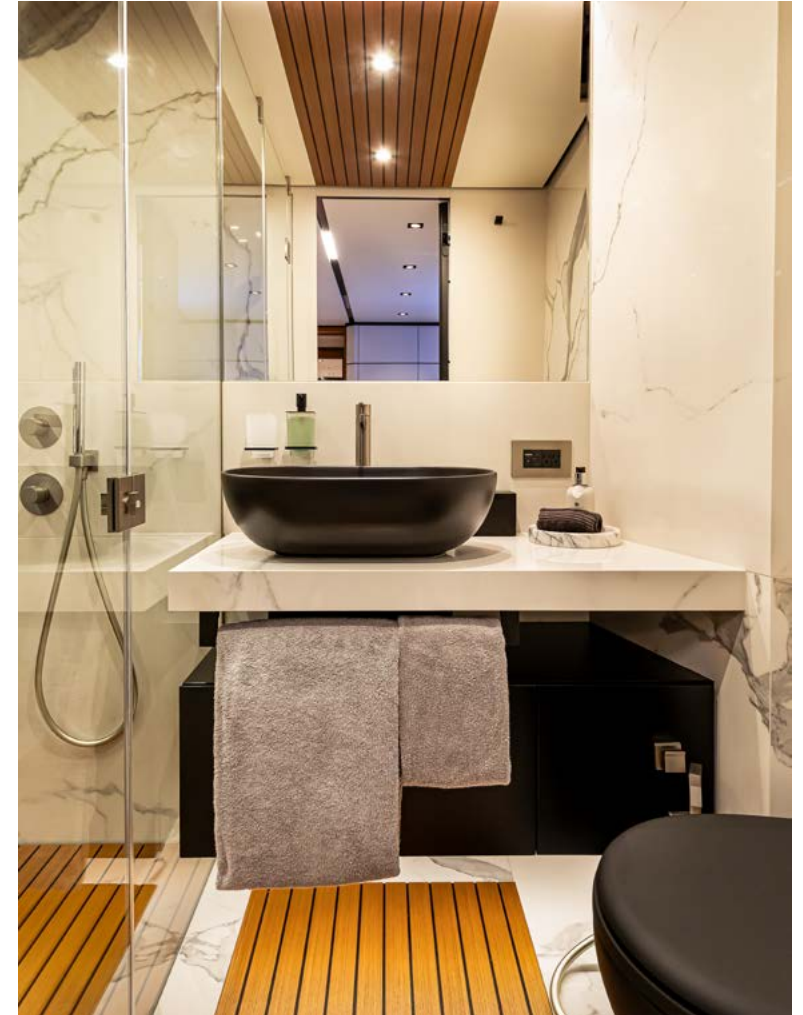
27M/88FT BAD MUTHA



27M/88FT BAD MUTHA



27M/88FT BAD MUTHA



GUEST CABINS

Located in the lower deck, the full-beam VIP suite is remarkably spacious and boasts a lounge area to starboard. At the forward end, the suite features his and hers en-suites separated by a common shower, providing ample privacy and convenience for guests. Additionally, in every bathroom, guests will find a selection of premium personal care products from the luxury skincare brand MUTHA®, personally founded by the owner, ensuring a touch of luxury and indulgence throughout their stay.

27M/88FT BAD MUTHA



27M/88FT BAD MUTHA



27M/88FT BAD MUTHA

QUIET EVENINGS



27M/88FT BAD MUTHA

DETAILS



27M/88FT BAD MUTHA



27M/88FT BAD MUTHA

WATER TOYS



27M/88FT BAD MUTHA



27M/88FT BAD MUTHA



27M/88FT BAD MUTHA

| MAIN CHARACTERISTICS | |
|----------------------|---|
| Motor Yacht | Motor Yacht |
| BUILDER | WALLY YACHTS |
| NAVAL ARCHITECT | Laurent Giles and Ferretti Group Engineering Department |
| BUILT | 2023 |
| LENGHT | 27.03 metres (88' 8") |
| BEAM | 7.66 metres (25' 2") |
| DRAFT | 2.00 metres (6' 7") |
| NUMBER CREW | 5 |
| HULL CONSTRUCTION | Aluminium |
| HULL CONFIGURATION | Semi Displacement |
| FLAG | Marshall Islands |

| ACCOMODATION | |
|---------------------|-----------------------|
| NUMBER OF GUESTS | 8 |
| NUMBER OF CABINS | 4 |
| CABIN CONFIGURATION | 2 Super King & 2 King |
| BED CONFIGURATION | NOT SPECIFIED |

| MECHANICAL EQUIPMENT | |
|----------------------|---|
| ENGINES | Four IPS diesel engines VOLVO D13 IPS1200 900 mhp / 662 kW (each) @ 2300 RPM |
| CRUISING SPEED | 18 knots |
| GROSS TONS | 200 |
| RANGE | 1000 |
| MAX SPEED | 21 knots |

| ENTERTAINMENT |
|---|
| A HIGH STANDARD AUDIO VIDEO (AV) SYSTEM WITH CENTRALLY INSTALLED MEDIA SERVER AND CENTRALIZED ENTERTAINMENT SYSTEM. |
| ALL LUXURY AREAS PROVIDED WITH LED TV'S AND APPROPRIATE SOUND SYSTEMS. |
| WI-FI NETWORK TO PROVIDE WI-FI COVERAGE IN ALL NOBLE AREAS, BOTH FOR AV SYSTEM AND INTERNET CONNECTION. |
| THE SYSTEM IS COMPATIBLE WITH LATEST PROTOCOLS AND TECHNOLOGY AVAILABLE |

| GYM AND EXERCISE EQUIPMENT |
|---|
| Suright Fitness Elastics (Set of 3) |
| Wotex resistance band kit (Set of 5) |
| Set of 10 vinyl dumbbells - from 1kg to 5kg |
| 2 x Voisen jump rope, adjustable, tangle-free speed jump rope with soft foam handles |
| Omeril resistance bands (set of 5) |
| Yoga blocks (1 set) |
| Yoga mats (4) |
| Nike foam roller (1) |
| Technogym multifunctional bench which includes: five pairs of hexagon dumbbells, 3 sets of weighted knuckles, 3 resistance bands of varying levels and an exercise mat, all houses inside the bench itself. |

| WATERTOYS |
|---|
| RYA Certified Training Centre - to teach Personal Watercraft Course (i.e. can give Jet ski license over 2 days) |
| 1 x 415 Williams Jet Tender |
| 1 x Sea-Doo Spark Jet Ski (max 2 people) |
| 2 x Seabob F5 |
| 2 x Flite boards Series 3 |
| 3 x Wakeboards (134, 138, 141 with 3 sets of bindings in different sizes) |
| 1 x Double trouble (towable inflatable) |
| 4 x Inflatable Stand Up Paddleboard's |
| Sunchill in colour bumble berry - the ultimate water hammock |
| 1 x Jobe Switch 2UP |
| 2 x BOTE Sling Chairs |





27M/88FT BAD MUTHA CHARTER BROCHURE